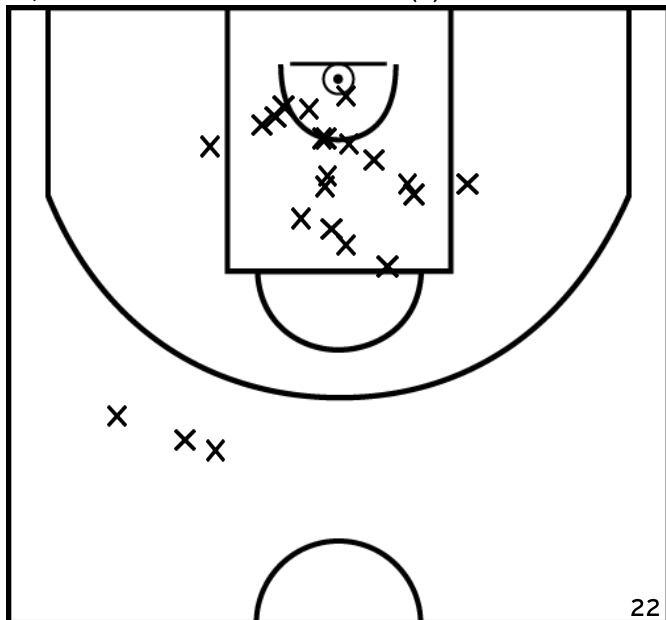


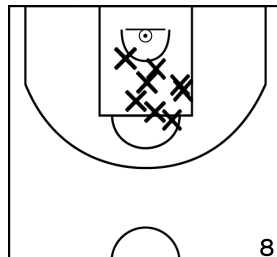
Rencontre: 11 Date: 15/11/25 Heure: 11:00

Arbitre: Boube Q Sureau N

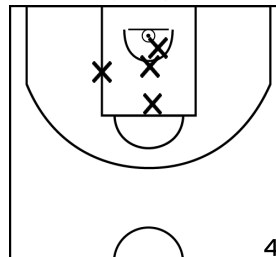
ÉQUIPE SAINT MEDARD BASKET - 2 (A)



PÉRIODE 1



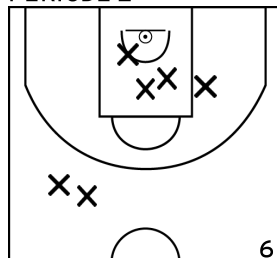
PÉRIODE 3



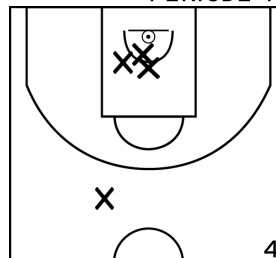
PROLONGATIONS



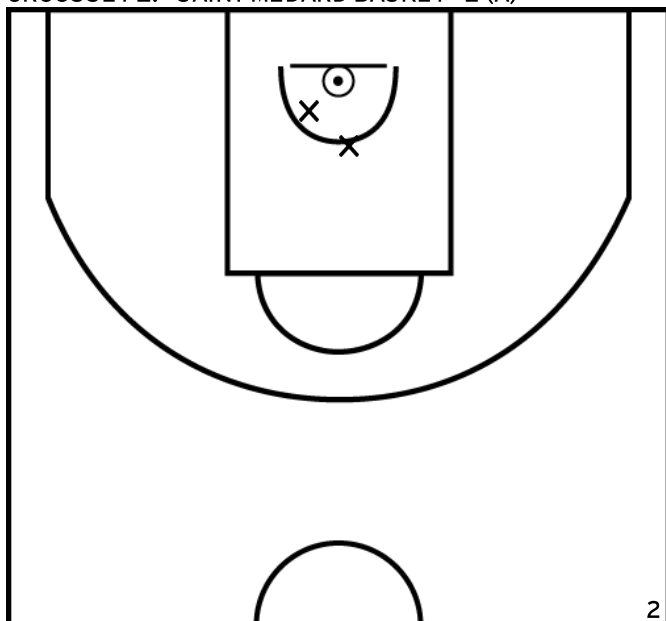
PÉRIODE 2



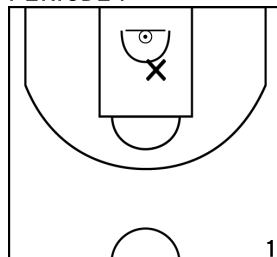
PÉRIODE 4



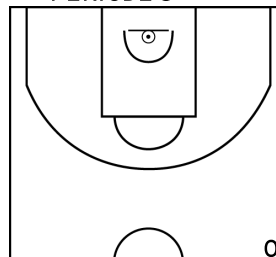
GROUSSET Z. - SAINT MEDARD BASKET - 2 (A)



PÉRIODE 1



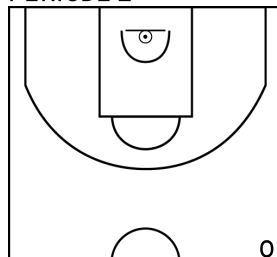
PÉRIODE 3



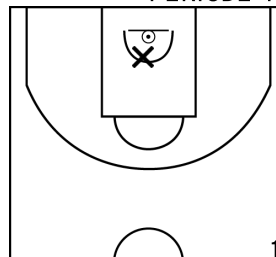
PROLONGATIONS



PÉRIODE 2



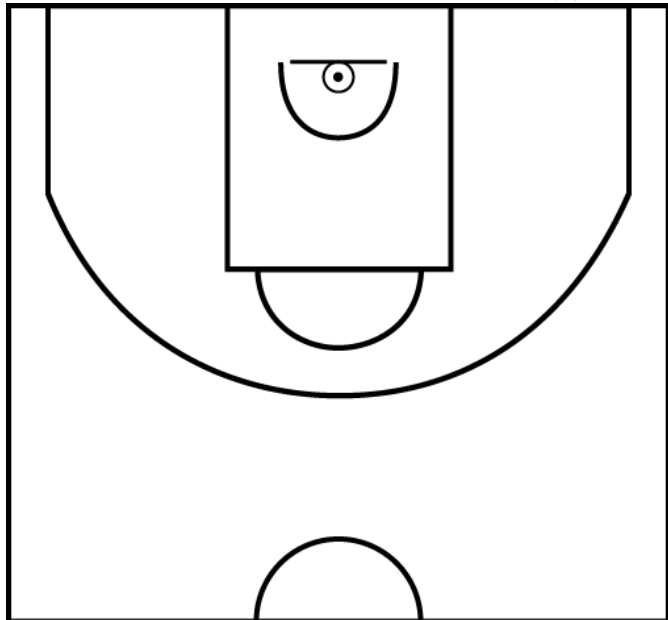
PÉRIODE 4



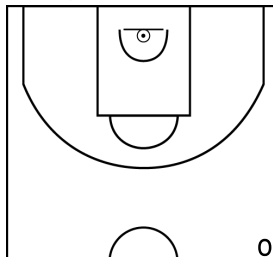
Rencontre: 11 Date: 15/11/25 Heure: 11:00

Arbitre: Boube Q Sureau N

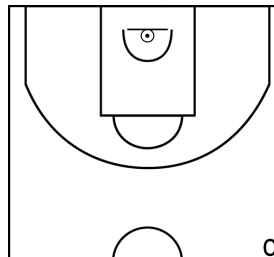
BERAT LAMBERT A. - SAINT MEDARD BASKET - 2 (A)



PÉRIODE 1



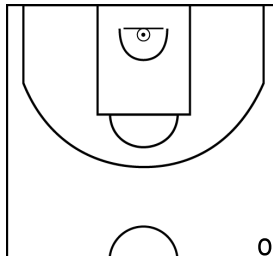
PÉRIODE 3



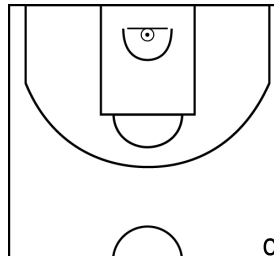
PROLONGATIONS



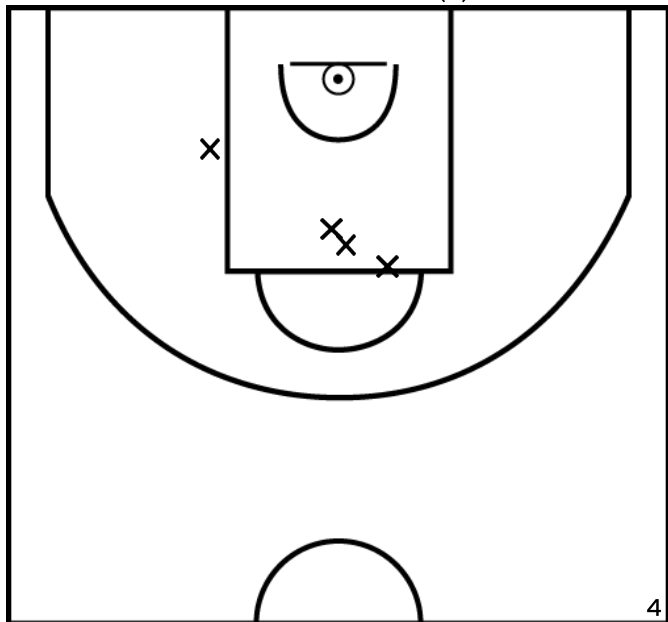
PÉRIODE 2



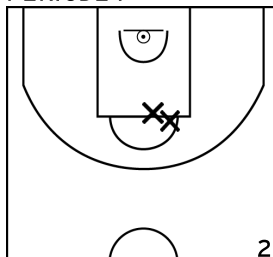
PÉRIODE 4



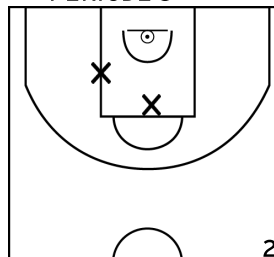
MASSE T. - SAINT MEDARD BASKET - 2 (A)



PÉRIODE 1



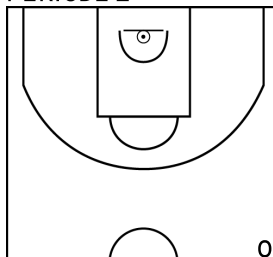
PÉRIODE 3



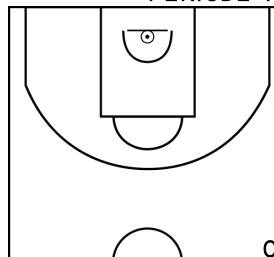
PROLONGATIONS



PÉRIODE 2



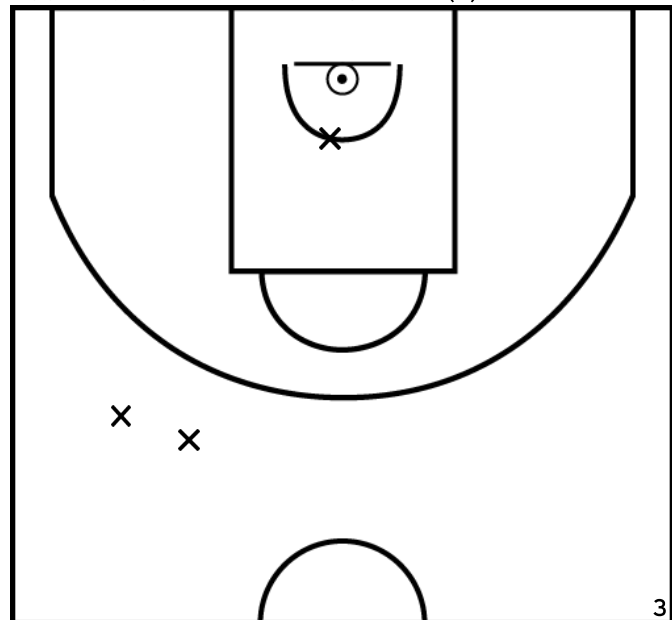
PÉRIODE 4



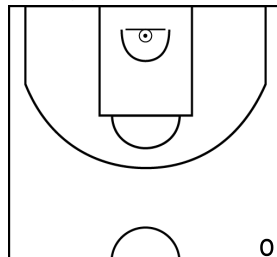
Rencontre: 11 Date: 15/11/25 Heure: 11:00

Arbitre: Boube Q Sureau N

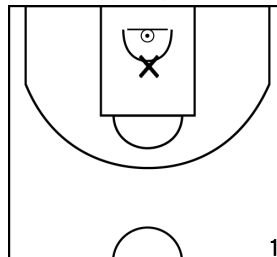
BOURY M. - SAINT MEDARD BASKET - 2 (A)



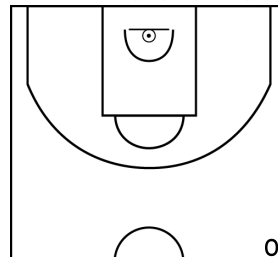
PÉRIODE 1



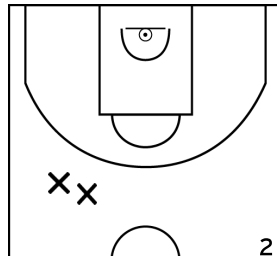
PÉRIODE 3



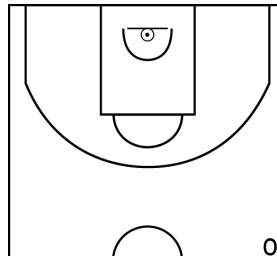
PROLONGATIONS



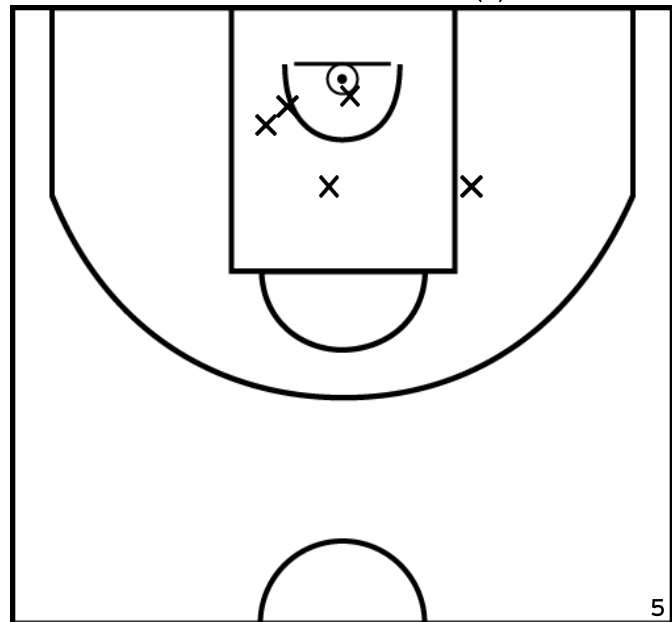
PÉRIODE 2



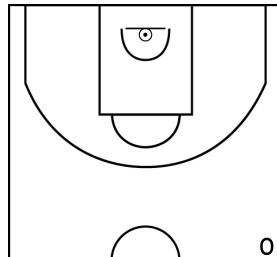
PÉRIODE 4



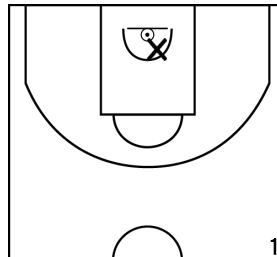
GUENDEZ V. - SAINT MEDARD BASKET - 2 (A)



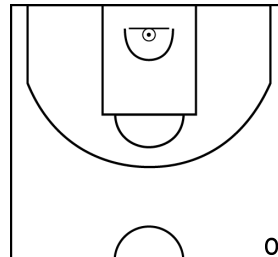
PÉRIODE 1



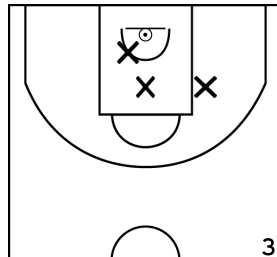
PÉRIODE 3



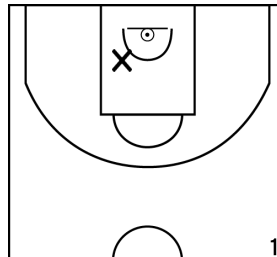
PROLONGATIONS



PÉRIODE 2



PÉRIODE 4

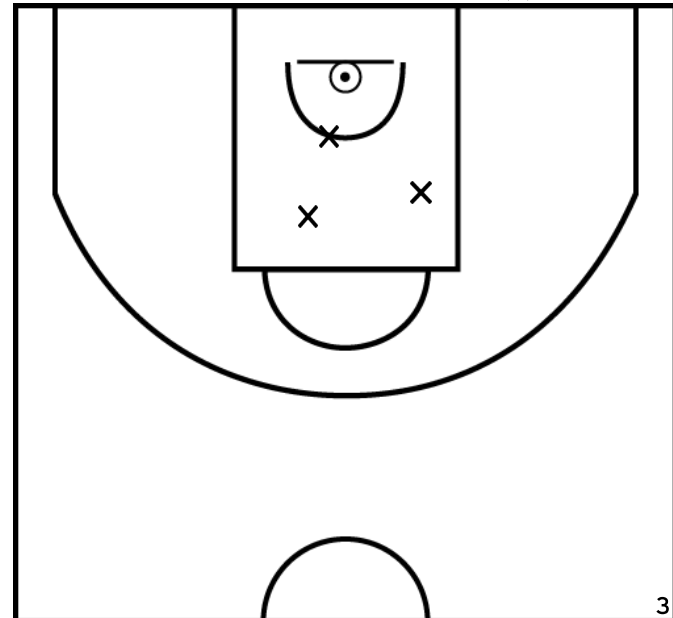


SAINT MEDARD BASKET - 2 57 - 60 BASKET BASSIN D'ARCACHON - 1

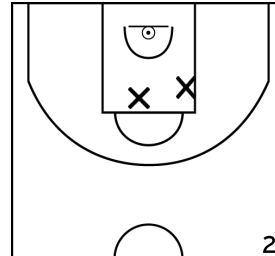
Rencontre: 11 Date: 15/11/25 Heure: 11:00

Arbitre: Boube Q Sureau N

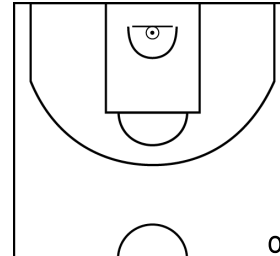
CHANTELOT R. - SAINT MEDARD BASKET - 2 (A)



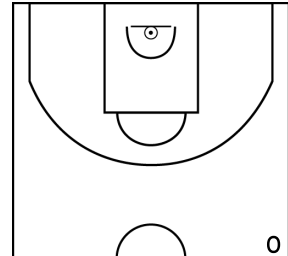
PÉRIODE 1



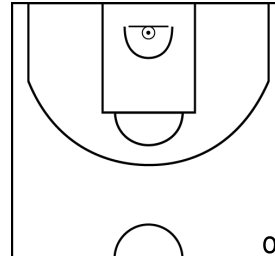
PÉRIODE 3



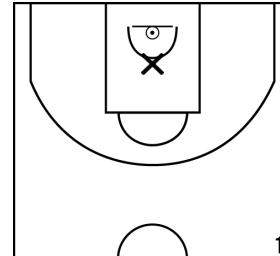
PROLONGATIONS



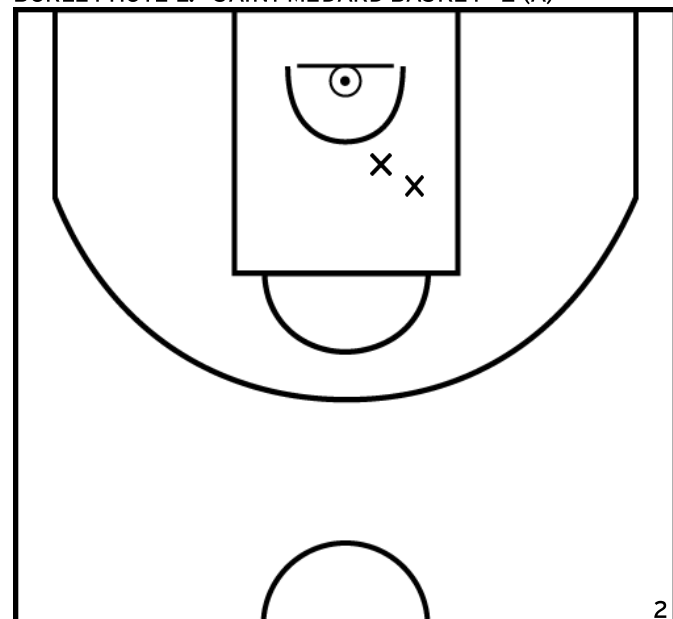
PÉRIODE 2



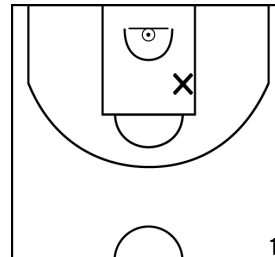
PÉRIODE 4



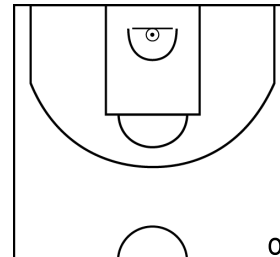
BORLET-HÔTE L. - SAINT MEDARD BASKET - 2 (A)



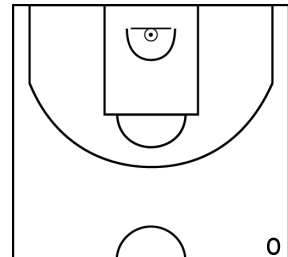
PÉRIODE 1



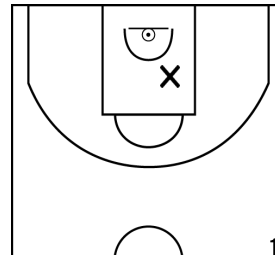
PÉRIODE 3



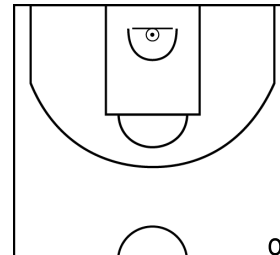
PROLONGATIONS



PÉRIODE 2



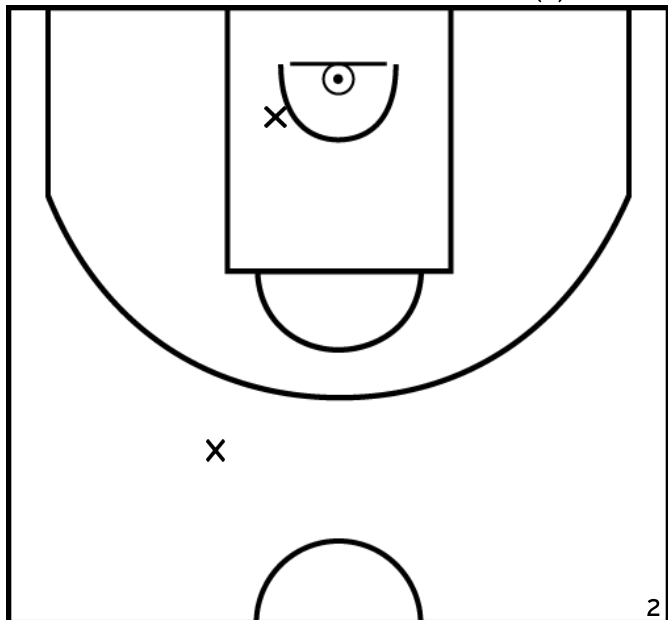
PÉRIODE 4



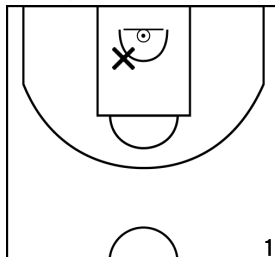
Rencontre: 11 Date: 15/11/25 Heure: 11:00

Arbitre: Boube Q Sureau N

DUPRE MARTIN E. - SAINT MEDARD BASKET - 2 (A)



PÉRIODE 1



PÉRIODE 3



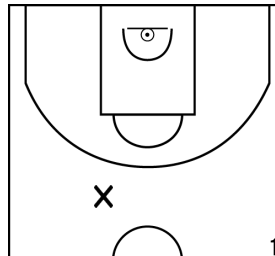
PROLONGATIONS



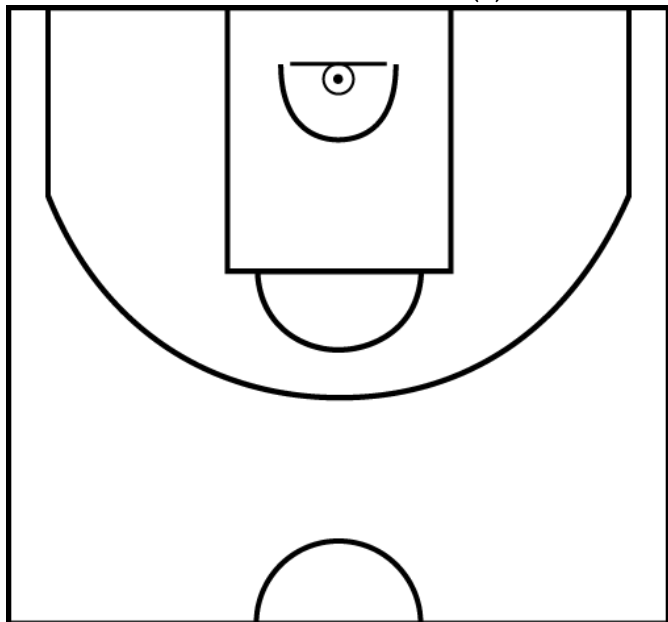
PÉRIODE 2



PÉRIODE 4



TAMENNE A. - SAINT MEDARD BASKET - 2 (A)



PÉRIODE 1



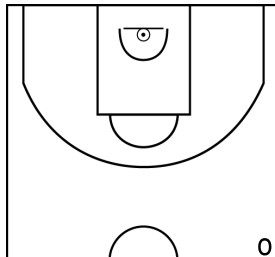
PÉRIODE 3



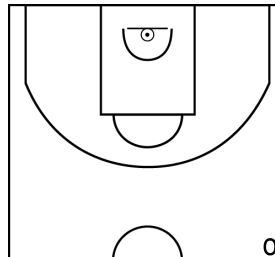
PROLONGATIONS



PÉRIODE 2



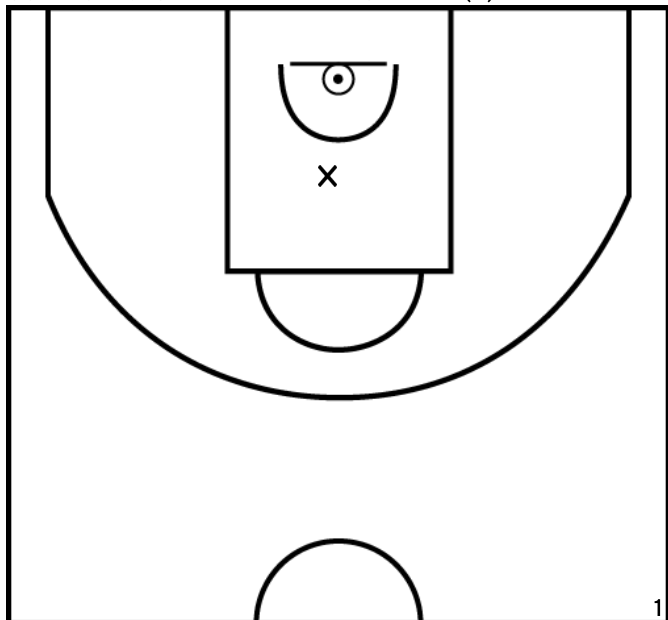
PÉRIODE 4



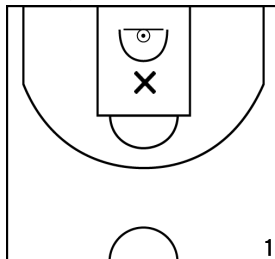
Rencontre: 11 Date: 15/11/25 Heure: 11:00

Arbitre: Boube Q Sureau N

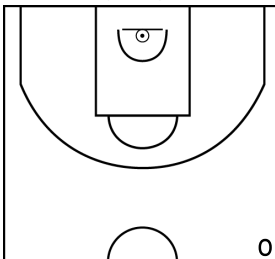
GUFFROY L. - SAINT MEDARD BASKET - 2 (A)



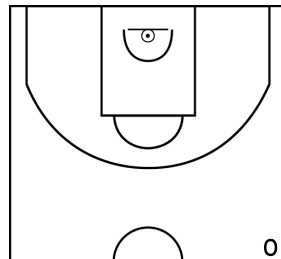
PÉRIODE 1



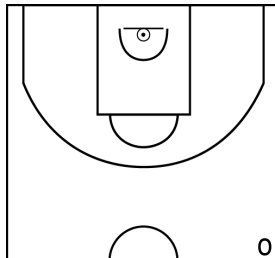
PÉRIODE 3



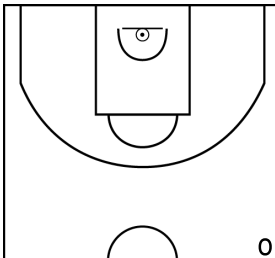
PROLONGATIONS



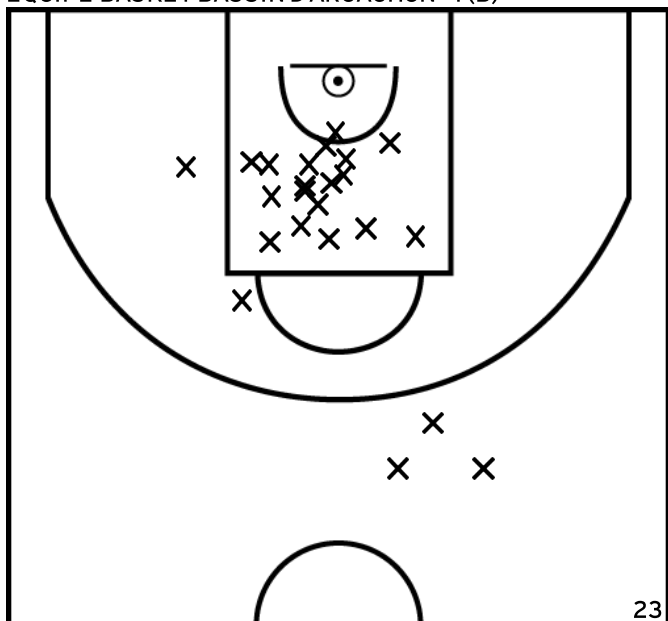
PÉRIODE 2



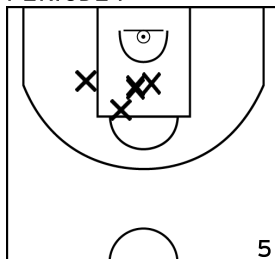
PÉRIODE 4



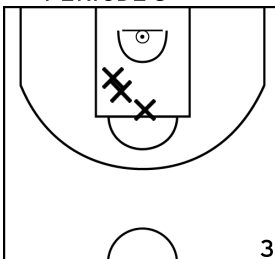
ÉQUIPE BASKET BASSIN D'ARCACHON - 1 (B)



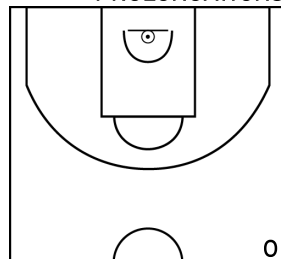
PÉRIODE 1



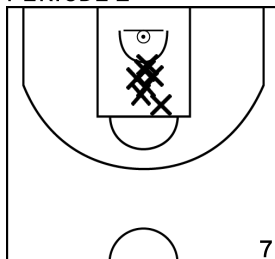
PÉRIODE 3



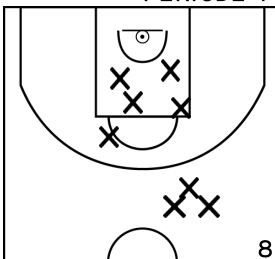
PROLONGATIONS



PÉRIODE 2



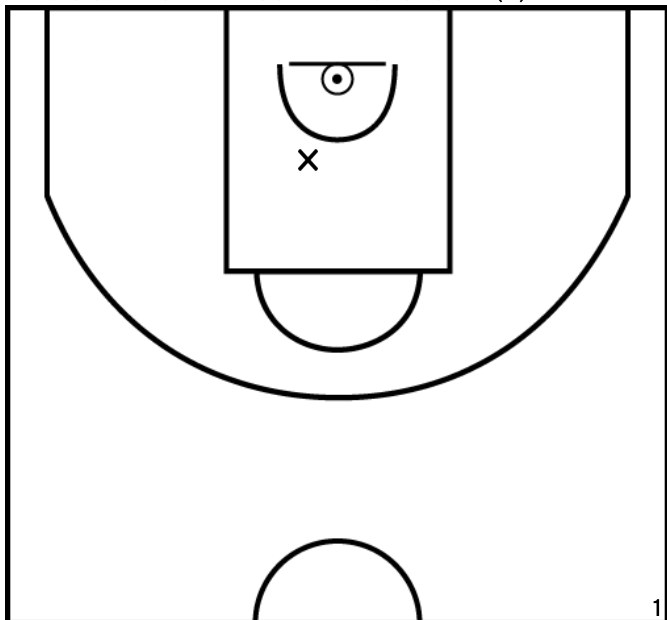
PÉRIODE 4



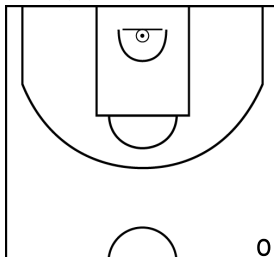
Rencontre: 11 Date: 15/11/25 Heure: 11:00

Arbitre: Boube Q Sureau N

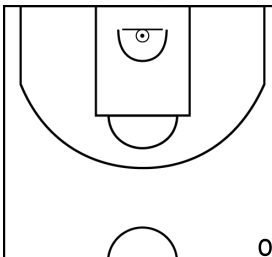
BINOIS J. - BASKET BASSIN D'ARCACHON - 1 (B)



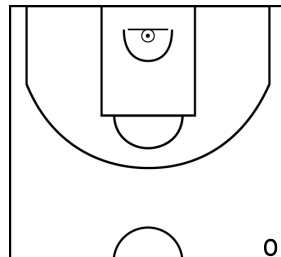
PÉRIODE 1



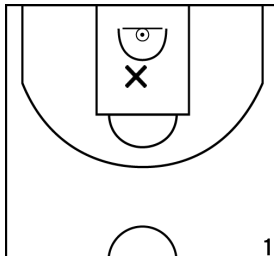
PÉRIODE 3



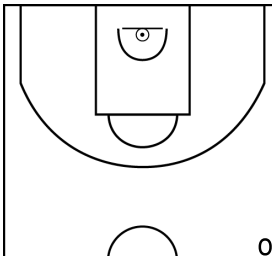
PROLONGATIONS



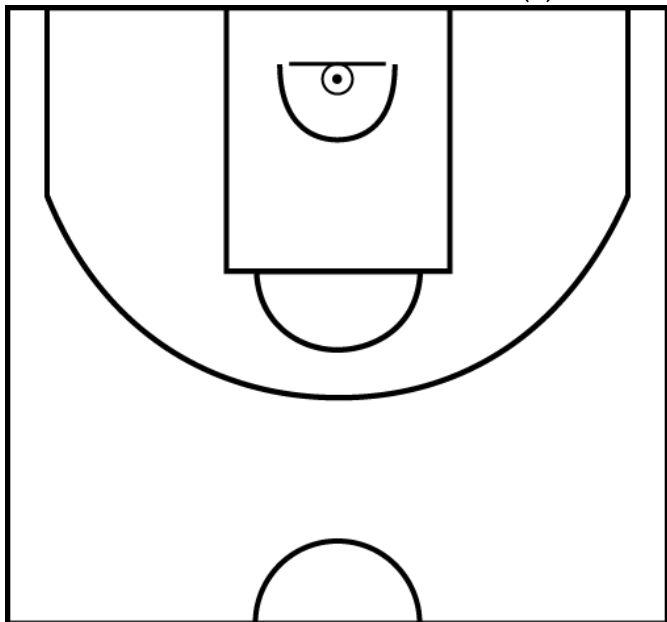
PÉRIODE 2



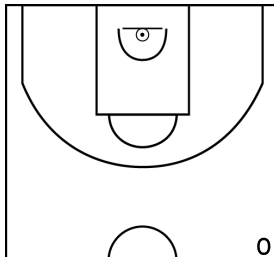
PÉRIODE 4



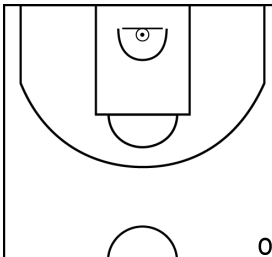
MOUSTIE A. - BASKET BASSIN D'ARCACHON - 1 (B)



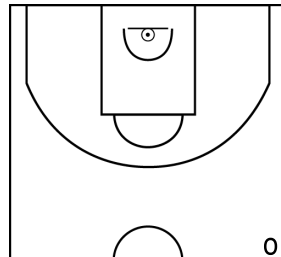
PÉRIODE 1



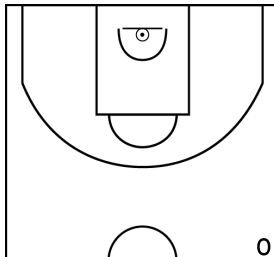
PÉRIODE 3



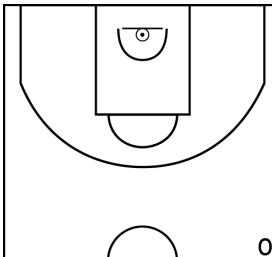
PROLONGATIONS



PÉRIODE 2



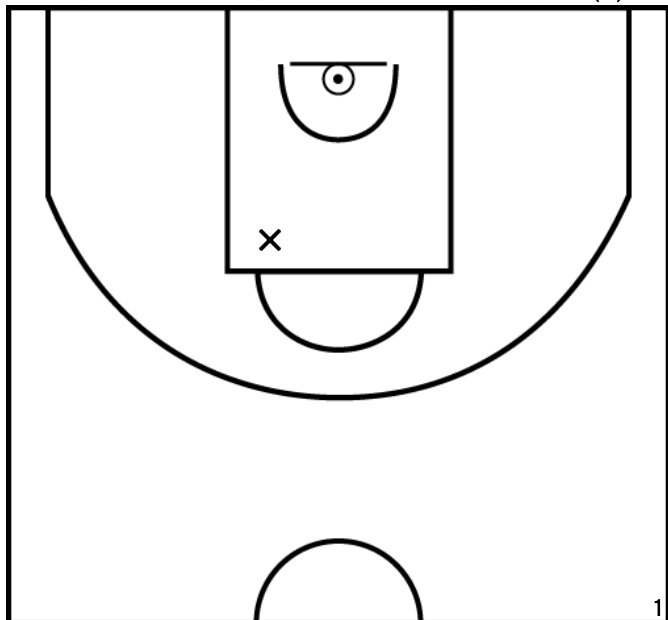
PÉRIODE 4



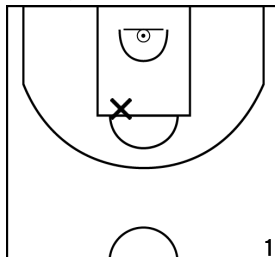
Rencontre: 11 Date: 15/11/25 Heure: 11:00

Arbitre: Boube Q Sureau N

HAGE SLEIMAN A. - BASKET BASSIN D'ARCACHON - 1 (B)



PÉRIODE 1



PÉRIODE 3



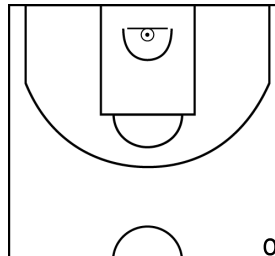
PROLONGATIONS



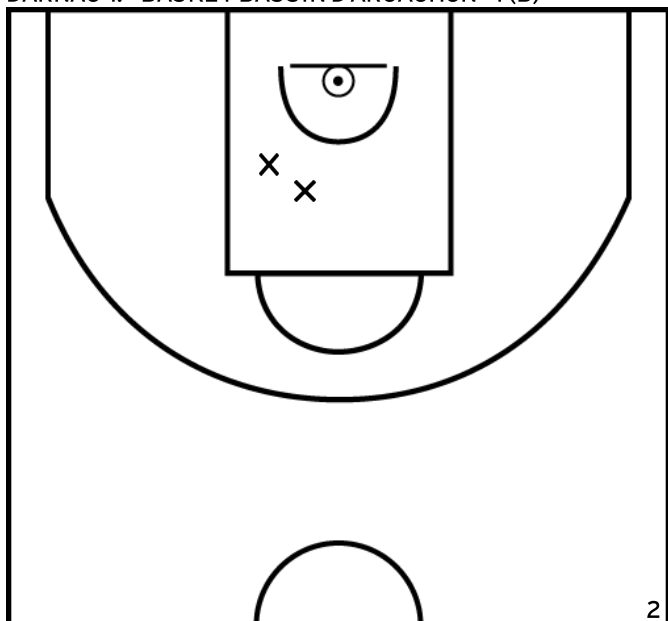
PÉRIODE 2



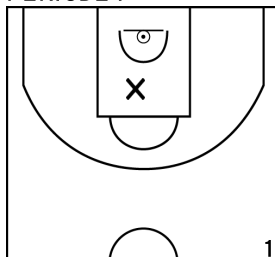
PÉRIODE 4



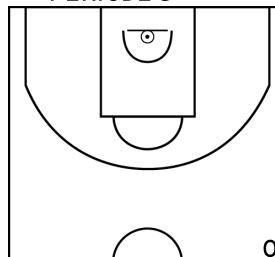
DARNAC T. - BASKET BASSIN D'ARCACHON - 1 (B)



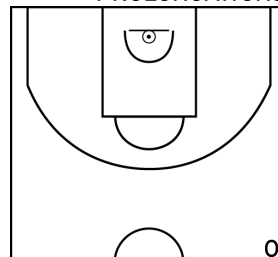
PÉRIODE 1



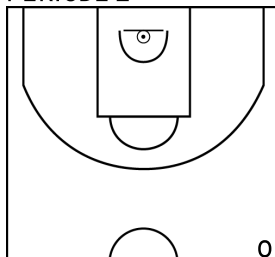
PÉRIODE 3



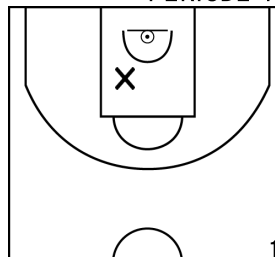
PROLONGATIONS



PÉRIODE 2



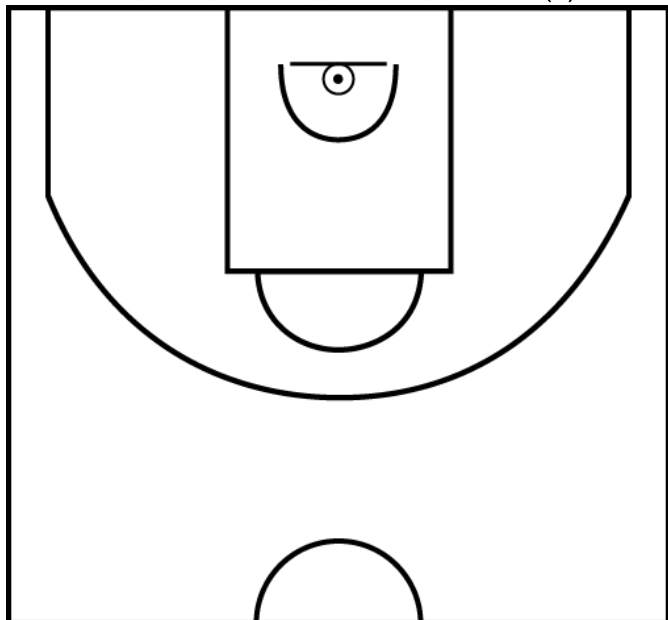
PÉRIODE 4



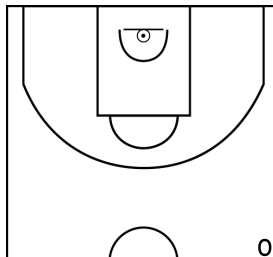
Rencontre: 11 Date: 15/11/25 Heure: 11:00

Arbitre: Boube Q Sureau N

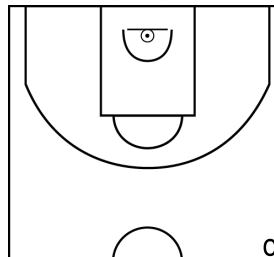
ARRONDEL S. - BASKET BASSIN D'ARCACHON - 1 (B)



PÉRIODE 1



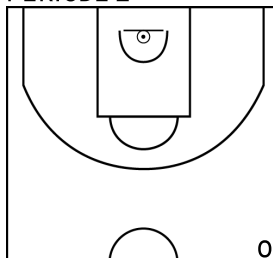
PÉRIODE 3



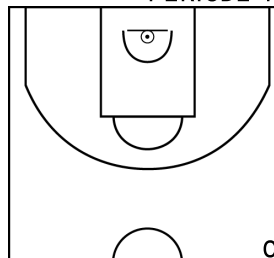
PROLONGATIONS



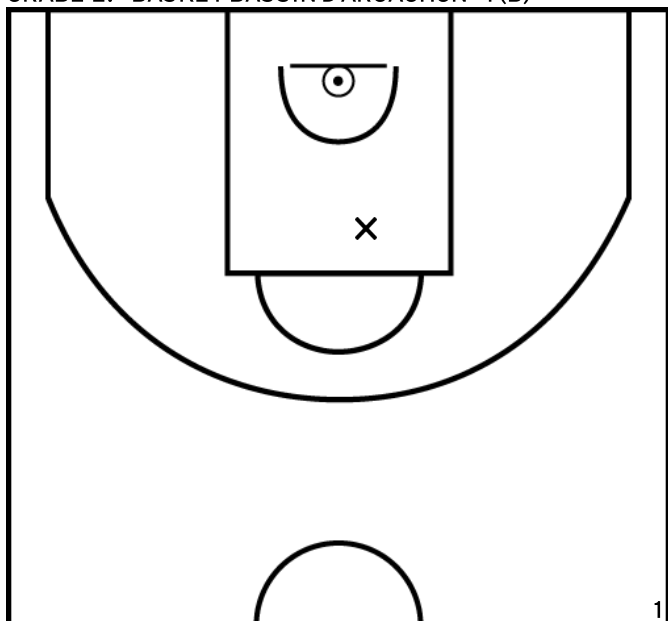
PÉRIODE 2



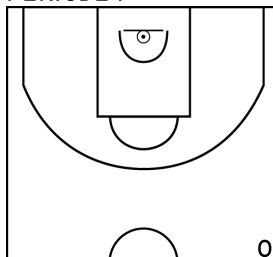
PÉRIODE 4



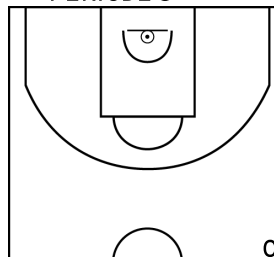
CRABE E. - BASKET BASSIN D'ARCACHON - 1 (B)



PÉRIODE 1



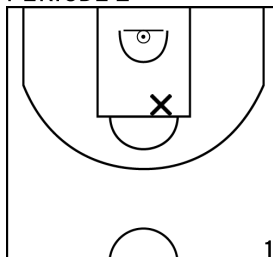
PÉRIODE 3



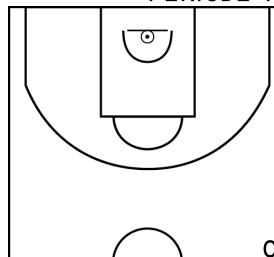
PROLONGATIONS



PÉRIODE 2



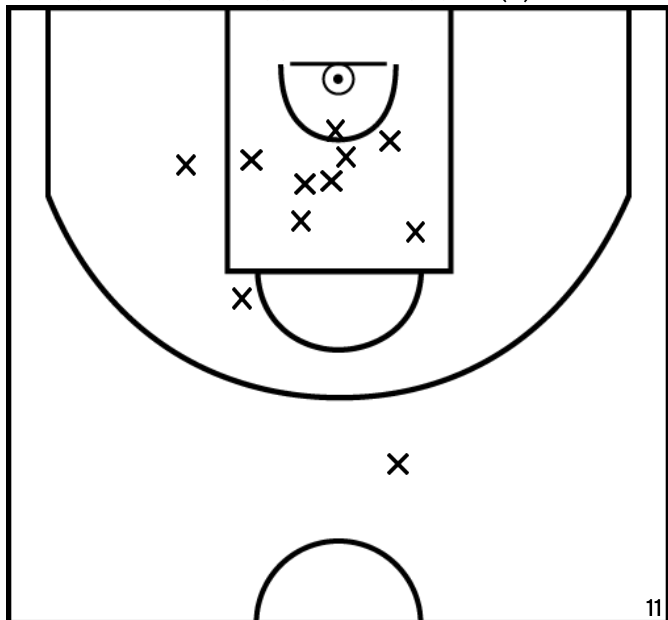
PÉRIODE 4



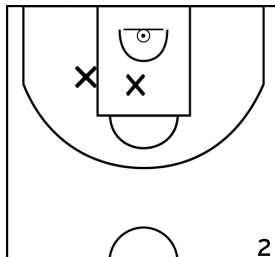
Rencontre: 11 Date: 15/11/25 Heure: 11:00

Arbitre: Boube Q Sureau N

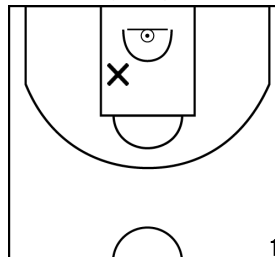
PHENG C. - BASKET BASSIN D'ARCACHON - 1 (B)



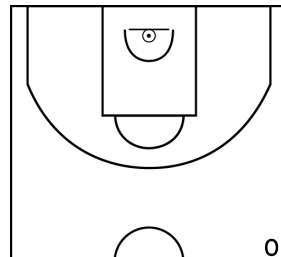
PÉRIODE 1



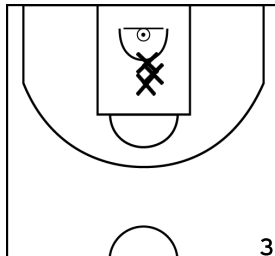
PÉRIODE 3



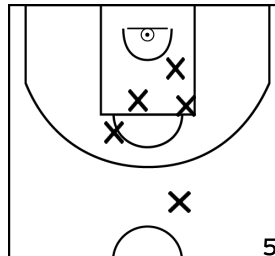
PROLONGATIONS



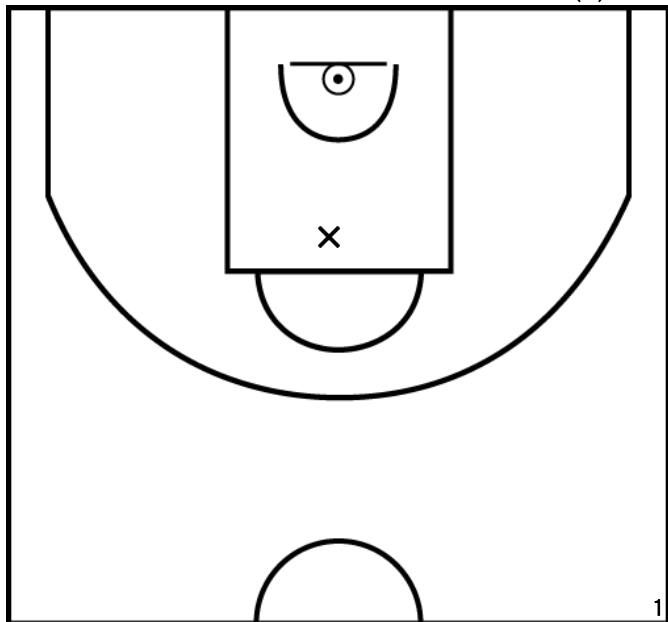
PÉRIODE 2



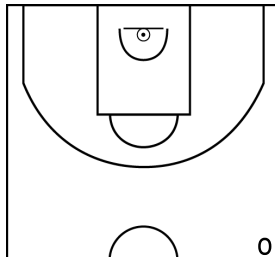
PÉRIODE 4



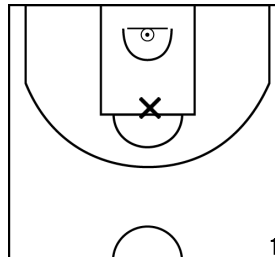
CANGUILHEM M. - BASKET BASSIN D'ARCACHON - 1 (B)



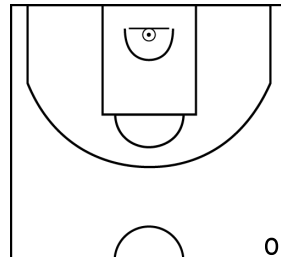
PÉRIODE 1



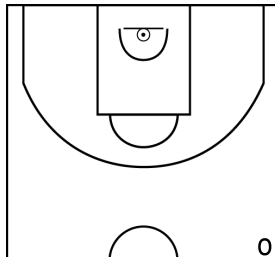
PÉRIODE 3



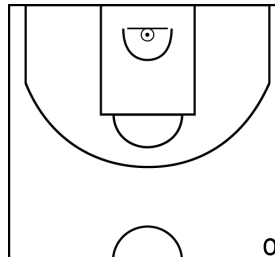
PROLONGATIONS



PÉRIODE 2



PÉRIODE 4

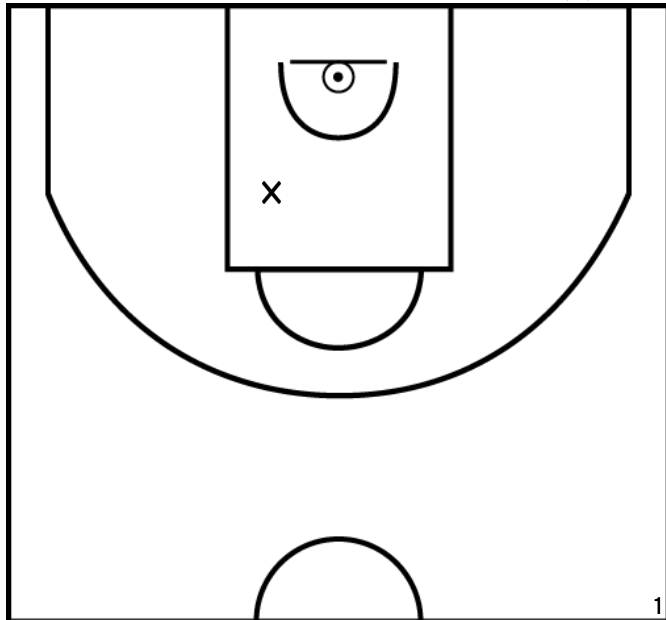


SAINT MEDARD BASKET - 2 57 - 60 BASKET BASSIN D'ARCACHON - 1

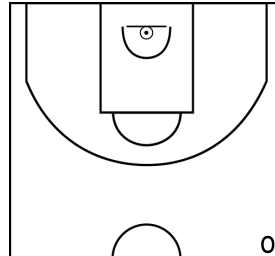
Rencontre: 11 Date: 15/11/25 Heure: 11:00

Arbitre: Boube Q Sureau N

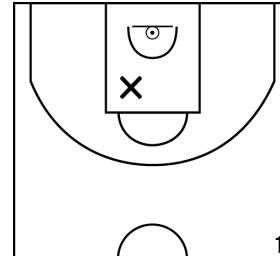
DUCOURNAU S. - BASKET BASSIN D'ARCACHON - 1 (B)



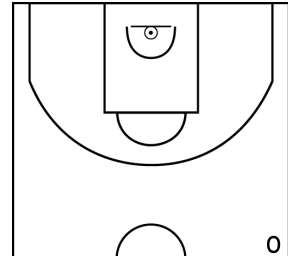
PÉRIODE 1



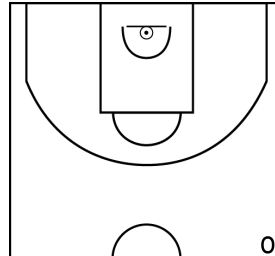
PÉRIODE 3



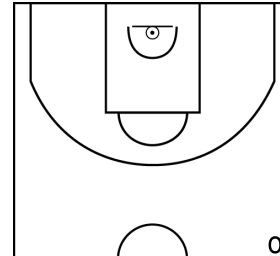
PROLONGATIONS



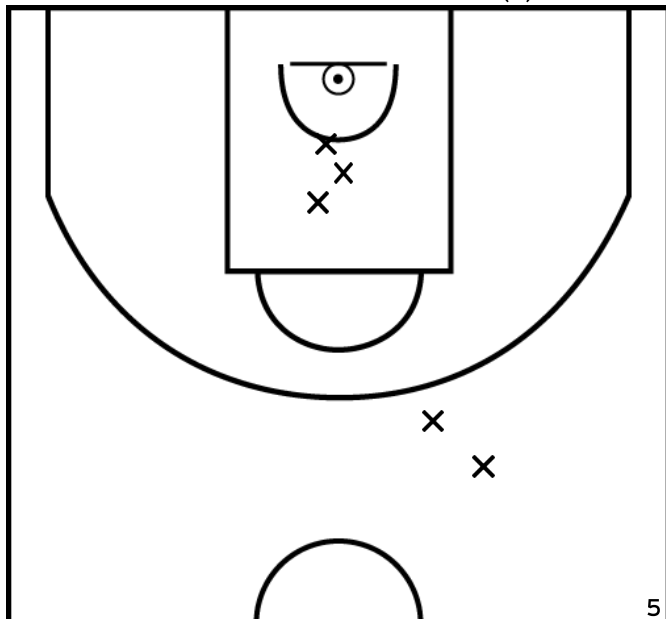
PÉRIODE 2



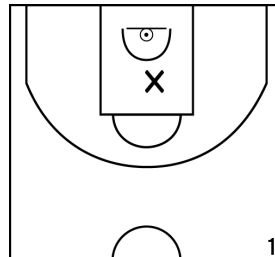
PÉRIODE 4



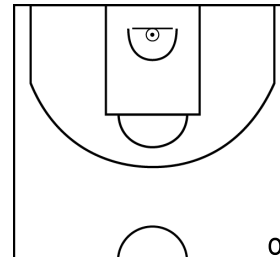
CARRE M. - BASKET BASSIN D'ARCACHON - 1 (B)



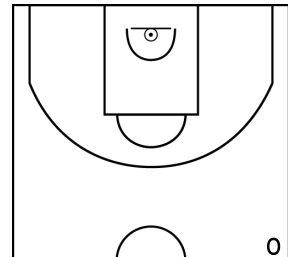
PÉRIODE 1



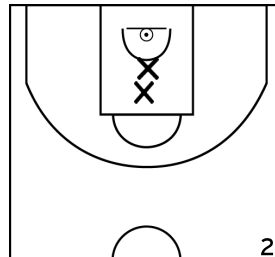
PÉRIODE 3



PROLONGATIONS



PÉRIODE 2



PÉRIODE 4

